

IN-LINE SIGHT GLASSES



A clear "sighting" section to observe material flow through pneumatic or vacuum conveying lines. The design features:

- Smooth "straight-thru" design
- Eliminates turbulence
- Permanently attached grounding strip to eliminate static electricity
- Wide range of sizes with either aluminum or steel ends
- Clear acrylic standard; pyrex available on request

VACUUM PRODUCTS



A complete line of tubing, fittings and bends for industrial, commercial and institutional vacuum systems. Typical applications include wet/dry material clean-up, high-velocity dust collection and special production applications. Available in:

- Size ranges from 2-1/8" through 12" O.D.
- 11 gauge through 16 gauge in aluminum, stainless steel, carbon and galvanized steel
- Inventory includes straights, bends, vacuum fittings, couplings, shrink sleeves and various accessories

Six types of material-handling hoses to meet a wide variety of bulk conveying system requirements. Suitable for both vacuum and pneumatic conveying of pellets, granular and powder materials. Available in:

- Size ranges from 1" through 8" I.D.
- MORR-CLEAR™ - economical food-grade PVC hose
- MORR-CLEAR™ Static - PVC hose with static-dissipating ground wire
- MORR-THANE™ - extended-performance, urethane-material transfer hose
- MORR-TUFF™ - a blend of urethane, PVC and rubber for severe service applications

FLEXIBLE HOSE



The original cam locking quick-coupling for quick, leakproof connections (without hand tools) for pipe, hose, tubing or tanks; for liquids, vapors, gases and dry products. Available in:

- Aluminum, stainless steel, forged brass, cast brass, ductile iron and polypropylene
- Size ranges from 1/2" to 10"

CAM AND GROOVE COUPLINGS



Serving the World in
Pneumatic and Vacuum
Conveying Products



INDUSTRY'S FIRST CHOICE



For Your Pneumatic
& Vacuum Conveying
Applications

Airlock

Marketed by
PT. AIRLOCK INDONESIA JAYA RAYA

Kawasan Industri Jababeka Tahap VI
Jl. East Park Boulevard Block C1B No. 7
Jatireja - Cikarang Timur, Bekasi
ZIP 17530, Indonesia

+62 21 8932 1222
+62 21 8932 1555
sales@airlockintl.co.id
www.airlockintl.co.id



Founded in 1941 ... The World's
Largest Manufacturer and Supplier
of Piping Components for the
Pneumatic Conveying Industry.



COUPLING PRODUCTS

Compression Couplings
Side-Band Couplings
Quickon II Couplers®
Gripper™ Couplers
All (A) Round Couplings

TUBE BEND PRODUCTS

Tube and Pipe Bends
Tubing and Pipe Straights
Custom Short-Radius Bends
Bollards and Bumper Guards
Extended-Wear Elbows
Heli-Groove Bends and Straights
Standard & Custom-Welded Fabrications
Sight Glasses
Vacuum Products
"Quickie" Assemblies
Installation Components

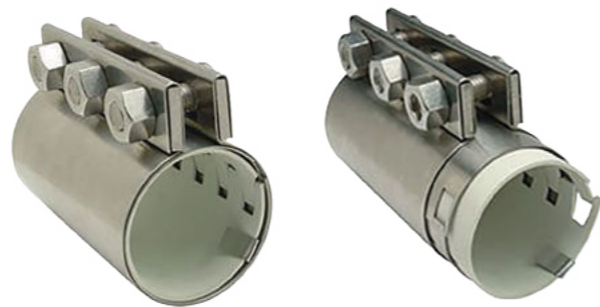
FLEXIBLE HOSE

PVC Flexible Hose
Metal Flexible Hose
and Custom-Fabricated
Metal Hose Assemblies
Hose Clamps and Accessories

CAM & GROOVE COUPLINGS

Cam and Groove Couplings
Compression Nut Assemblies

STANDARD COMPRESSION COUPLINGS



The **"Original"** Morris compression coupling designed to join pipe and tubing for pneumatic and industrial conveying systems.

- Easy to install
- Pipe and tube sizes 1/2" through 48"
- Standard construction is galvanized steel
- Also available in stainless steel and aluminum
- Gasket materials: black and white neoprene, silicone and others
- Static conductive grounding strip is standard

SIDE-BAND COMPRESSION COUPLINGS



Maximum holding power to connect pipe and tubing. Unique design with:

- Improved axial-force holding power
- Dual-locking side bands and two one-piece longitudinal bars to withstand end pull
- Higher operating pressure
- Size ranges from 2" O.D. through 24" O.D. pipe or tubing sizes



TUBE AND PIPE BENDS



Short and long radius bends for pneumatic and vacuum conveying systems. Readily available from stock in a variety of materials, wall thicknesses, and center line radii.

- Available in aluminum, stainless steel, carbon and galvanized steel
- Size ranges from 1" O.D. through 12" IPS
- Standard wall thickness :
 - Tubing - 16, 14, 11 gauge
 - Pipe - 5, 10, 40 schedule
 - Other wall thickness available upon request

TUBING AND PIPE (Straight Lengths)



Extensive inventory of pipe and tubing straights with a variety of wall thicknesses available in:

- Aluminum, stainless steel, carbon and galvanized steel
- Size ranges from 1" through 12" O.D.
- Welded and extruded seamless

QUICKON II SINGLE AND DUAL COUPLERS

Quick and efficient installation or removal of pneumatic and vacuum conveying lines or systems with a twist of the wrist. No tools required. Applications provides:

- Fast take down and reassembly of lines
- Reduced coupler weight
- All stainless steel construction
- Sizes range from 38 mm through 324 mm
- O.D. in standard 101 mm lengths; Dual Quickons are 241 mm long
- Standard gasket is food-grade gum rubber; silicone is also available



HELI-GROOVE AND SHOT-PEENED BENDS AND STRAIGHTS

Heli-groove and shot-peened bends and straights reduce angel-hair residue in pneumatic/vacuum conveyed plastic pellets,

- Available in aluminum and stainless steel
- Size ranges from 2" O.D. through 8" IPS

Heligroove

Shot Peened

